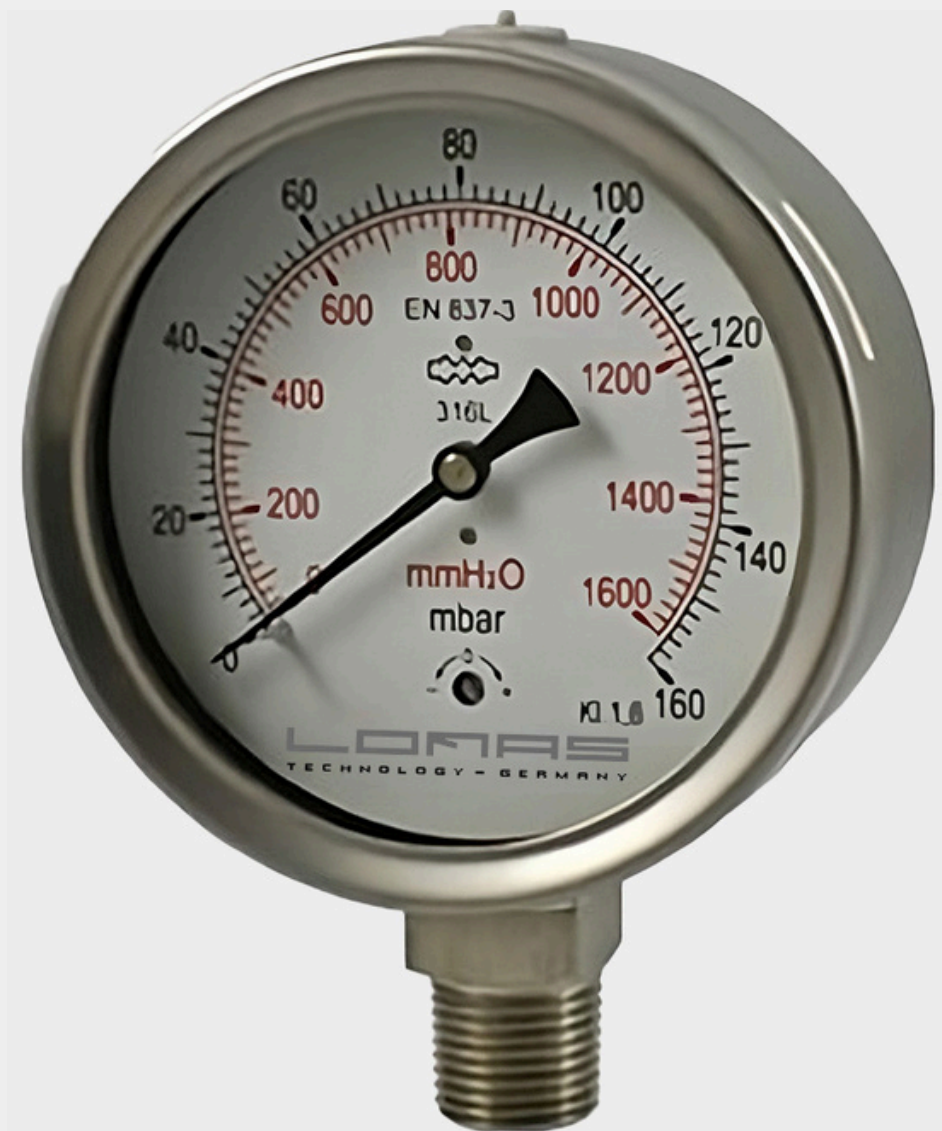




## LSCCL - G Series All stainless steel Capsule Pressure Gauge





## Application

LSCL - G Series All stainless steel Capsule Pressure Gauge series is meticulously designed to provide accurate and reliable performance, making it exceptionally well-suited for use in a wide range of challenging conditions. It excels in dry, corrosive environments where other gauges might struggle and is specifically engineered to handle various gaseous media with precision. Whether used in industrial applications, laboratory settings, or other specialized environments, this gauge offers dependable operation and durability, ensuring consistent results even in the most demanding situations."

## Specifications

### Nominal sizes

4", 6"

### Accuracy

+/- 1.6%

### Connection

BSP 1/2"

### Operating Temperature

- **Ambient:** -20°C to +60°C
- **Medium:** +100°C maximum

### Scale Range(according to EN 837 1/5)

- **Pressure ranges:** 0 to 60/100/160/250/400/600/1000 mbar
- **Vacuum range:** -600/-400/-250/-160/-100/-60/-40/-25/-16/-10/-6 to 0 mbar

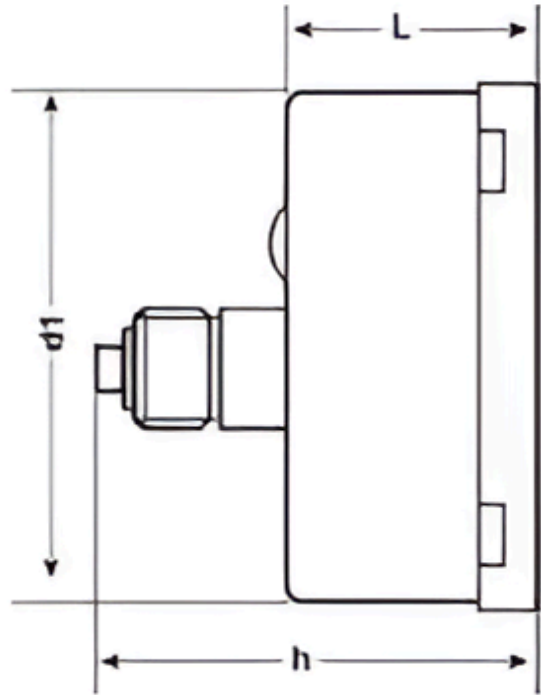
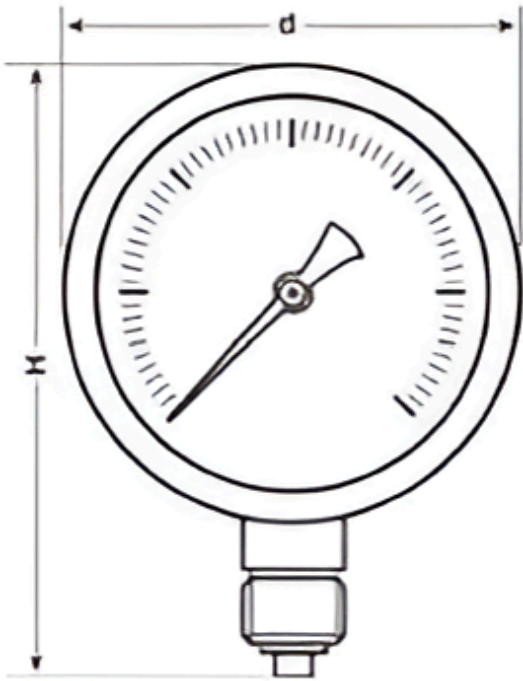
### Material Specification

- **Case and DIN bayonet ring:** AISI 304 stainless steel
- **Window:** Instrument Glass
- **Wetted parts:** AISI 316 stainless steel
- **Movement:** AISI 304 stainless steel or chrome-plated brass

### Options

- NPT, BSPT, or other process connection
- Restrictor
- Double dial range or other dial ranges

## Dimension Drawing



DIAL SIZE	d	d1	L	H	h
4"	Ø101	99	50	138	85
6"	Ø161	159	50	200	85