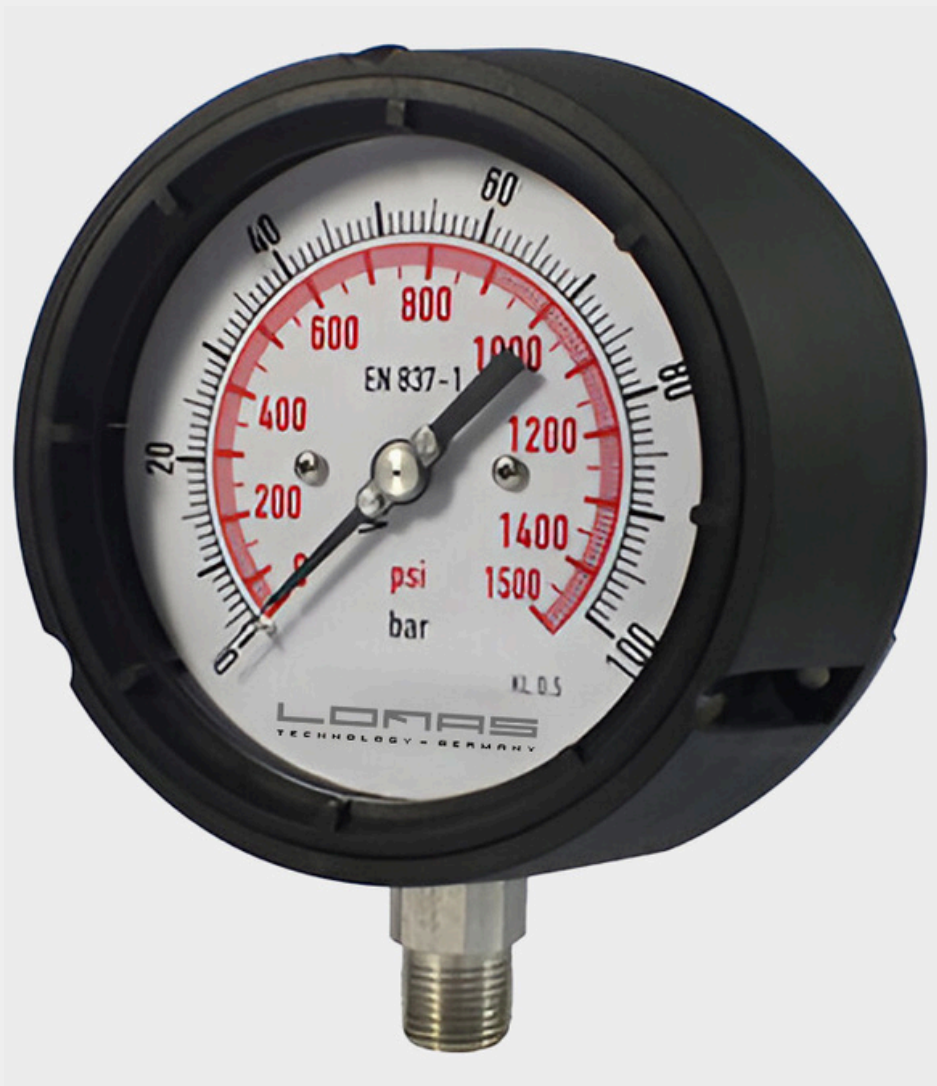




LP-G Series Phenolic Case Bourdon Tube Pressure Gauge





Application

The Lomas LP-G Series features a solid front phenolic case with a safety blow-out system. The safety version includes a non-splintering window, a solid baffle wall between the measuring system and the dial, and a blow-out back. In the event of failure, the operator is protected from the front, as media or components can only be ejected through the back of the case. The phenolic case offers excellent resistance to chemicals, weather, and corrosion. It complies with the safety requirements of EN 837-1, BS1780, and ASME B40.100. This model is specifically designed for use in the chemical industry, petrochemical industry, power plants, mining, onshore and offshore environments, environmental technology, machine building, and general plant construction, as well as in oil refineries.

Special Features

- ✓ Safety version with solid baffle
- ✓ Range: 0-1 bar to 1000 bar
- ✓ Conforms to EN 837-1 and ASME B40.100
- ✓ Stable load-cycle stability and shock resistance

Specification

Dial size

4.5"

Short time

1.3 x full scale value

Accuracy

+/- 0.5%, +/- 1%

IP class

IP 65

Range

Vacuum 0-1 bar to 1000 bar

Permissible temperature

- Ambient: -40 ... +65 °C dry
- -20 ... +65 °C filled with glycerin

Pressure limitation

- Steady: Full scale value
- Fluctuating: 0.9 x full scale value

Material Specification

Case and bezel

Phenolic black color

Window

Laminated safety glass

Dial plate

aluminum

Pointer

aluminum, adjustable

Process connection

- stainless steel 316, 1/2"NPT male lower mount
- thread on request

Movement

stainless steel 304

Filling

Glycerin

Bourdon tube

stainless steel 316L

Options

- Other process connection
- Diaphragm seal assembly (DS)
- Copper alloy wetted parts (CW)
- Restrictor (RS)

Dimension Drawing

