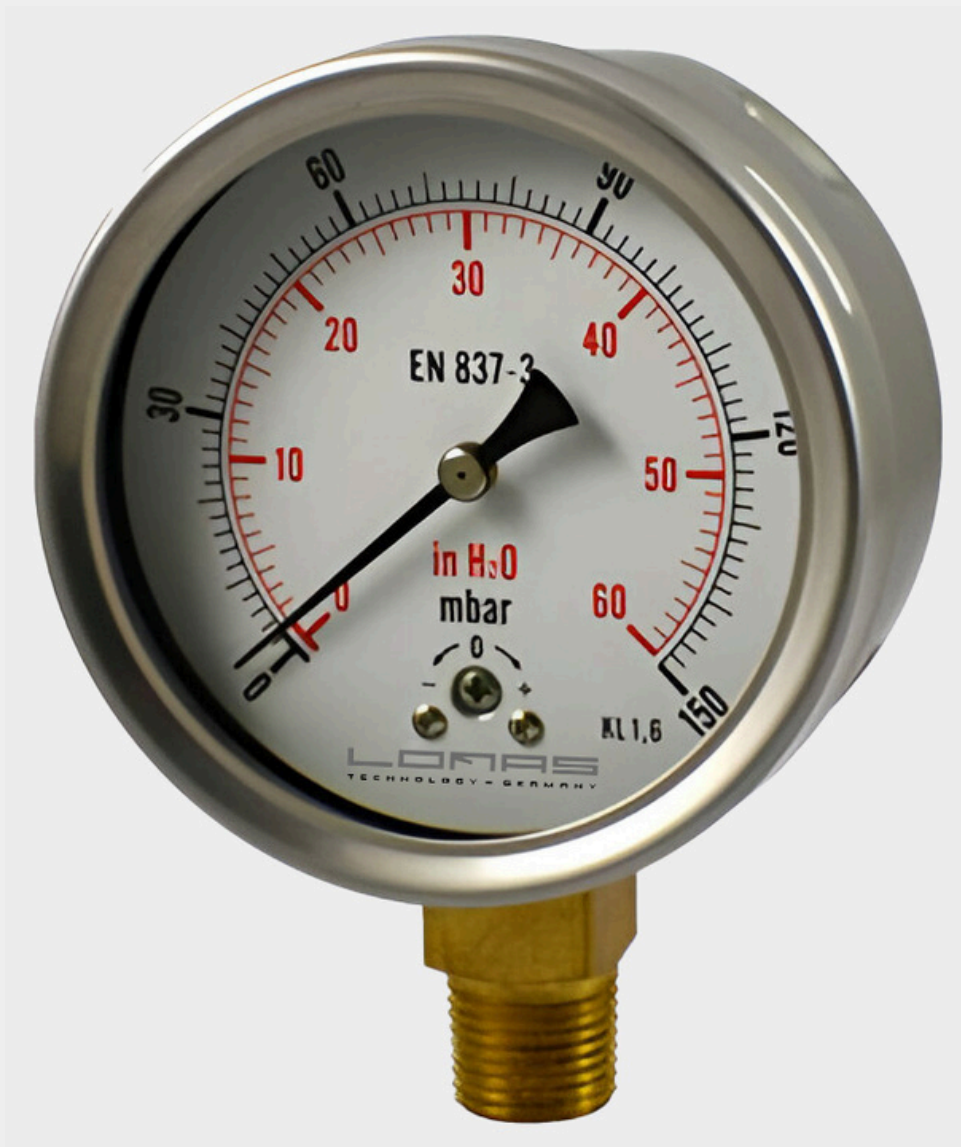




LCL - G Series Capsule Low Pressure Gauge



Application

The Lomas LCL - G series capsule low pressure gauge is well-suited for use with dry and gaseous media that do not react adversely with copper alloy components. It is primarily employed in medical, vacuum, and laboratory technology applications for content measurement and filter monitoring purposes.

Specifications

Nominal sizes

4"

Connection

BSP 1/2" for 4"

Scale Range, according to EN 837-1/5

- **Pressure ranges:** 0 to 16/25/40/60/100/160/250/400/600/1000 m bar
- **Vacuum range:** -600/-400/-250/-160/-100/-60/-40/-25/-16 to 0 mbar

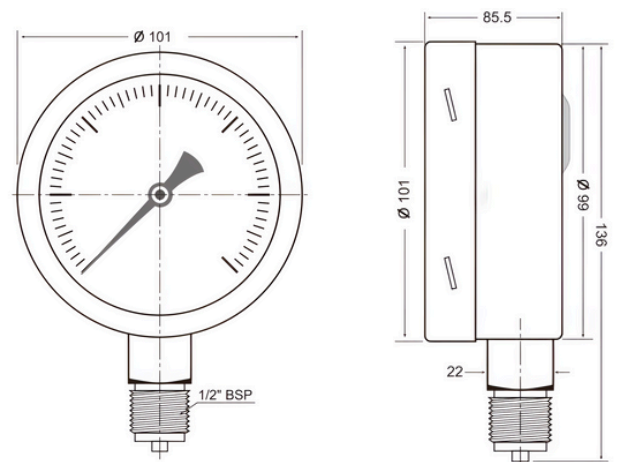
Material Specification

- **Case and DIN bayonet ring:** AISI 304
- **stainless steel Window:** Instrument Glass
- **Wetted parts:** copper capsule, brass
- **connection Movement:** brass

Options

- NPT, BSPT or other process connection
- Restrictor
- Double dial range or other dial ranges

Dimension Drawing



Operating Temperature

- **Ambient:** -20°C..+60°C
- **Medium:** +60°C maximum