

LOMAAS

LMC Series Magnetic Snap-on Contact Pressure gauge





Application

The LOMAS LMCS series magnetic snap-on contact gauge is designed for automatic control and signal transfer. When the pressure reaches the set value, the contact opens or closes the circuits via a magnetic electric contact.

Specification

Nominal sizes

2.5", 4", 6"

Connection

- BSP 1/4" for 2.5"
- BSP 1/2" for 4", 6"

Protection class

IP 54

Scale Range, according to EN 837-1/5

- **Pressure ranges:** 0 to 0.6/1/1.6/2.5/4/6/
10/16/25/40/60/100/160/250/400bar
- **Vacuum range:** -1 to 0 bar
- **Compound pressure:** -1 to 0.6/1.5/3/5/
9/15/24 bar

Operating Temperature

- **Ambient:** -20°C to 60°C
- **Medium:** 60°C maximum

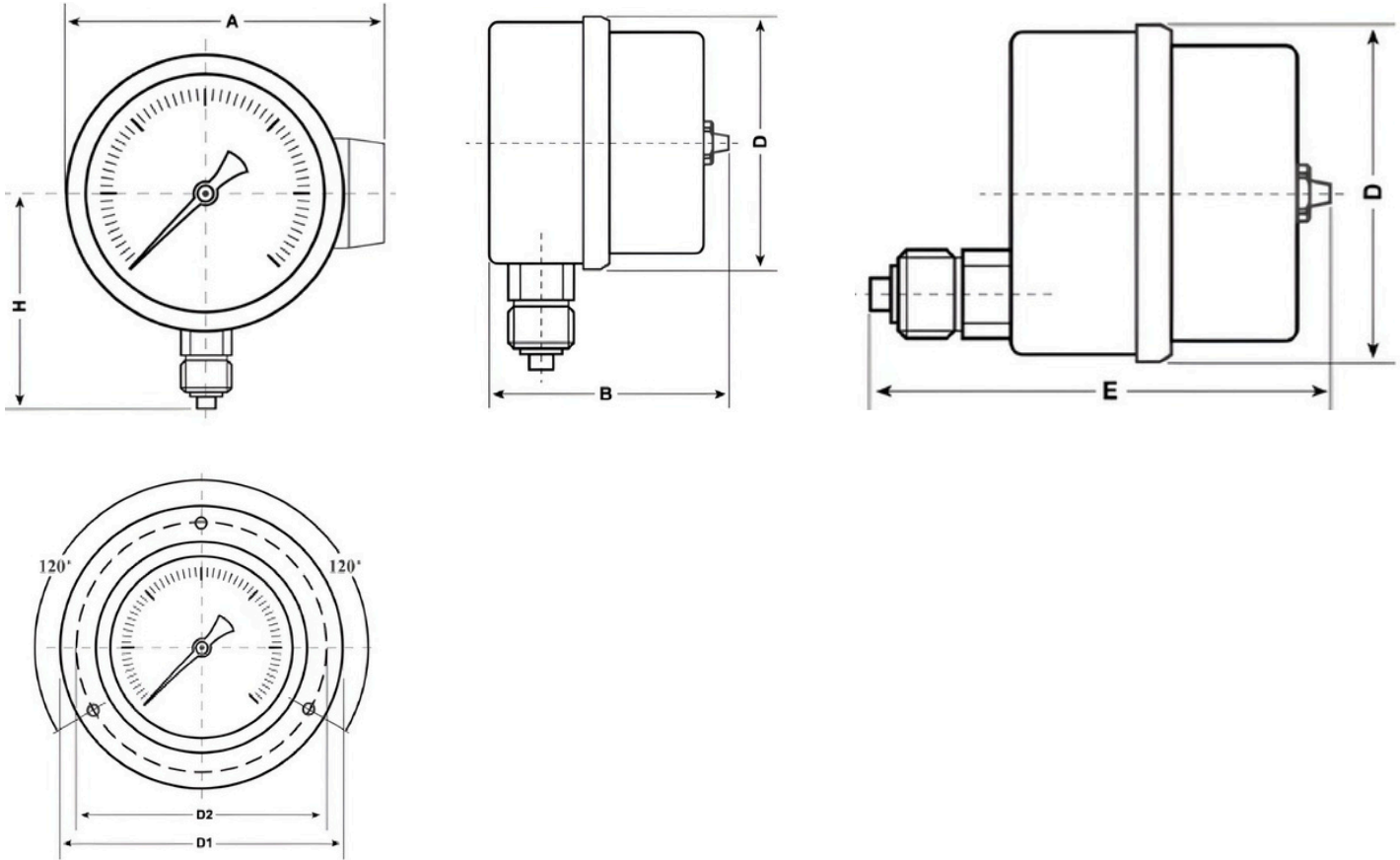
Material Specification

- **Case:** black steel case and bezel
- **Window:** high polycarbonate
- **Wetted parts:** brass bourdon tube and connection
- **Movement:** brass
- **Contacts:** Two contacts, one contact, Often open, often close
- **Maximum working voltage:** AC380V or DC220V
- **Maximum current:** 1A
- **Contact Power:** 30VA

Options:

- NPT, BSPT or other process connection
- Non-standard dial range

Technical Drawing



DIAL SIZE	A	B	D	H	D1	D2	E
2.5"	75	55	60	55	--	--	--
4"	122	88	102	92	0130	0116	135
6"	168.5	87	150	120	0178	0166	142